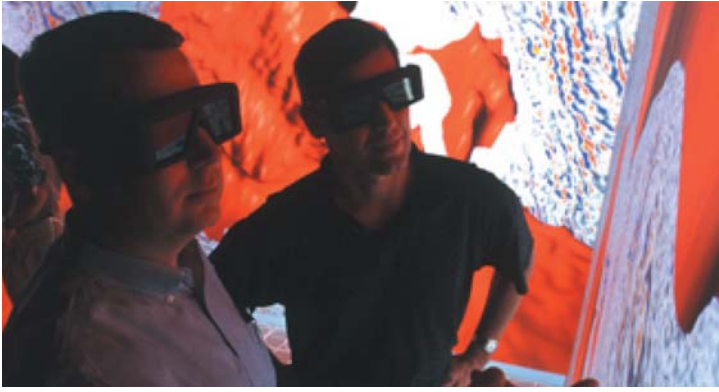


REALD



Stereo3D™ Visualization

CREATED SPECIFICALLY FOR STEREO3D™ VISUALIZATION ON THE DESKTOP

Bring hidden obstacles to the surface with this powerful solution for engineers, scientists, and GIS professionals who develop, view and manipulate complex 3D computer graphics on the desktop. CrystalEyes® 3 Workstation Eyewear utilizes Stereo3D™ technology to provide superior visualization capabilities. The advantages are crystal clear – CrystalEyes 3 Workstation Eyewear saves time and money through improved accuracy, enhanced design review, reduced design cycles and faster time-to-market.

Product Overview

CrystalEyes 3 Workstation Eyewear is a wireless set of liquid crystal eyewear designed for Stereo3D imaging in engineering and scientific applications specifically on the desktop. The product delivers high-definition, stereoscopic 3D images on all major PC and UNIX platforms in conjunction with stereo-enabled software and graphics subsystems. CrystalEyes 3 Workstation Eyewear is activated by infrared signals transmitted by an emitter connected to the user's workstation.

Key Benefits

- Enables earlier detection of design errors by allowing more accurate visualization of complex 3D images on the desktop.
- Enhances design review and reduces project design cycles.
- Allows better understanding of extremely complex data.
- Accelerates time-to-market.

CrystalEYES® 3 Workstation Eyewear





Specifications

CrystalEyes3 Workstation Eyewear

Weight	3.3 oz (93 grams)
Shutters	Liquid Crystal
Field Rate	From 80 to 160 fields per second
Transmittance	32% typical
Contrast Ratio	1500:1 typical
Battery Life	>400 hours (continuous usage)
Battery Type	Two 3V Li/MnO2

Emitters

E2 Standard Emitter <i>(included)</i>	
Range	12 feet
ELR 2 Long Range Emitter <i>(purchased separately)</i>	
Range	20 feet
EXXR Large Venue Emitter <i>(purchased separately)</i>	
Range	70 feet

Features

- Includes E2 Emitter compatible with any StereoGraphics emitter
- Improved design reduces interference from overhead lighting and other emitters
- Battery indicator alerts user to replace batteries
- Battery life over 400 hours of continuous operation!
- Multiple fit options provide comfort and accommodate a wider user array
- Optional lanyard for protection and accessibility
- Sync Circuitry guarantees highest quality stereo viewing
- 3-year Warranty
- CrystalEyes Workstation delivers a typical dynamic range of 1500:1 ensuring a realistic, high-resolution, color image
- * Emitter installation typically requires only a simple cable connection
- **CrystalEyes 3 Workstation Eyewear is supported on every major PC and workstation platform
- Nearly every Molecular Modeling and GIS/mapping software developer supports CrystalEyes Workstation



STEREOGRAPHICS®

A RealD Scientific Company
5335 Sterling Drive
Boulder, CO 80301
P: (800) 783-2660
Fax: (303) 448-9573

Email: stereographics-sales@reald.com

www.reald-corporate.com/scientific

**Requires stereo-ready graphics card and driver.
** Windows Vista is not supported at this time.*

Specifications subject to change without notice. Stereo3D is a trademark and CrystalEyes 3 Workstation Eyewear, StereoGraphics, and the StereoGraphics logo are registered trademarks of StereoGraphics Corporation. All other brand and product names are registered trademarks of their respective owners.

CrystalEYES[®]3 Workstation Eyewear